

PIXAPRO PANTOGRAPH TRACK SYSTEM INSTRUCTIONS.



K-080101



K-080102



K-080103



K-080104

Box Content

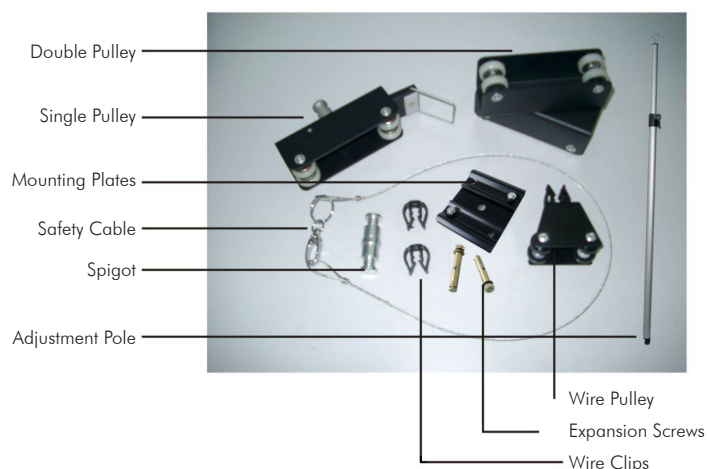
Item SKU:	Pantographs	Fixed 3m Single Rails	Mobile 3m Double Rails	Mounting Plates	Single Pulley	Double Pulleys	Cable Pulleys	Cable Clips	Adjustment Poles
K-080101	1	2	2	6	1	4	3	8	1
K-080102	2	2	2	6	2	4	6	16	1
K-080103	3	2	2	6	3	4	9	24	1
K-080104	4	2	2	6	4	4	12	32	1

Pantograph Specifications

Load	1-15kg
Weight	4.5kg
Jink Size	Inside Diameter 16mm (5/8)
Condense Size	330mm x 98mm x 395mm
Extension	39.5cm - 203cm



Pantograph System Parts



PIXAPRO Pantograph Track System

EssentialPhoto
PIXAPRO[®]

PIXAPRO LTD.
UNIT 5 Sterling Park, Pedmore Road
Brierley Hill, West Midlands DY5 1TB
Tel: 0121 552 3113
Company Registration No. 07601334
Web: www.essentialphoto.co.uk
E-mail: customerservice@essentialphoto.co.uk

Facebook: www.facebook.com/EssentialPhoto.UK

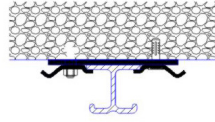
Twitter: www.twitter.com/EssentialPhoto_

INSTALLATION & OPERATION



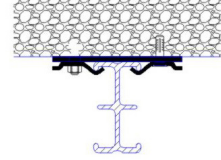
1

Pre-assemble these brackets onto the rails at ground level, to ensure correct alignment before mounting to the ceiling. Mounting brackets should be spaced no less than 45cm (1.5ft) apart, using three per rail.



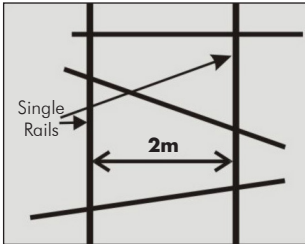
2

Attach the Clamping Plates to the single rails. If you take a look at the end of a single rail, it should look like a T; attach the clamping plate to the top of the T.



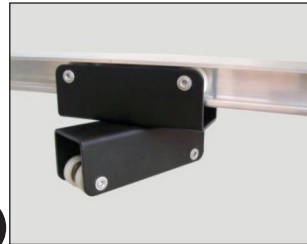
3

Attach the Clamping Plates to the double rails. If you take a look at the end of a single rail, it should look like a T; attach the clamping plate to the top of the T.



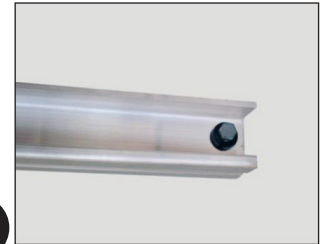
4

Fix the Single rails on the ceiling with the clamping plates. Use the expansion screws M6 (two per bracket). The gap between the single rails should be 2m (6.56 ft)



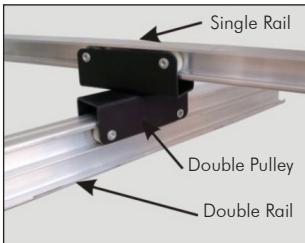
5

Attach double pulleys to the single rails.



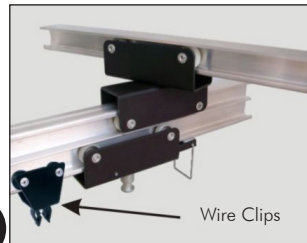
6

Insert the limit screw M6, in the holes on the ends of each rail to prevent the carriages from coming off the rails, and to prevent the moving rails from coming off the carriages.



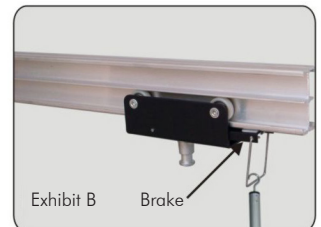
7

Install the Double Rails onto the double pulleys.



8

Install Single Pulley and cable (with wire clips) on the double rails.



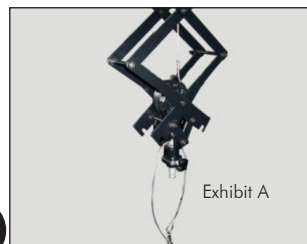
9

Adjust the pole, which will attach to the spigot (brakes located on the single pulley; see exhibit B)



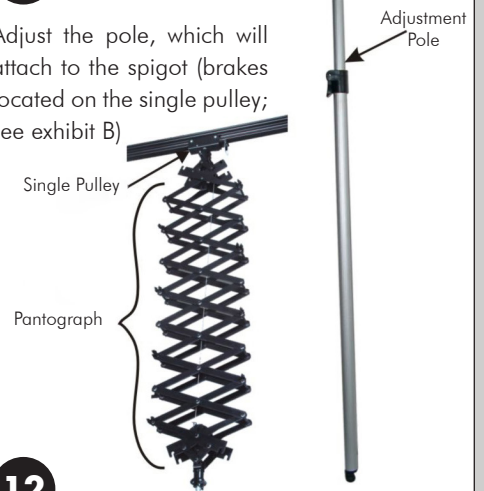
10

First insert the limiting cover cap, then insert the limiting screw M6 in the holes at the end of the rails to prevent the carriages from coming off the rails, and to prevent the moving rails from coming off the carriages.



11

Attach safety cables to your lights (exhibit A). You will pull the cable when you want to slide the pulley along the rail, and release to lock into place. The smaller cable attaches to your light and to the bottom of the pantograph to prevent the light from falling.



12

Insert the expansion rack (pantographs) to the single pulleys and tighten the knob of the expansion rack to fasten it